

2012-2013 EQAO  
RESULTS  
GRADE 10 OSSLT &  
GRADE 9 MATHEMATICS



# ONTARIO SECONDARY SCHOOL LITERACY TEST

- **The OSSLT is a provincial test of the reading and writing skills students have acquired by Grade 10**
- **It is based on the reading and writing skills expected in the Ontario Curriculum *across all subject areas* up to the end of Grade 9**
- **This year, students were delayed writing by a month due to inclement weather; they wrote a second version of the test on May 14, 2013**

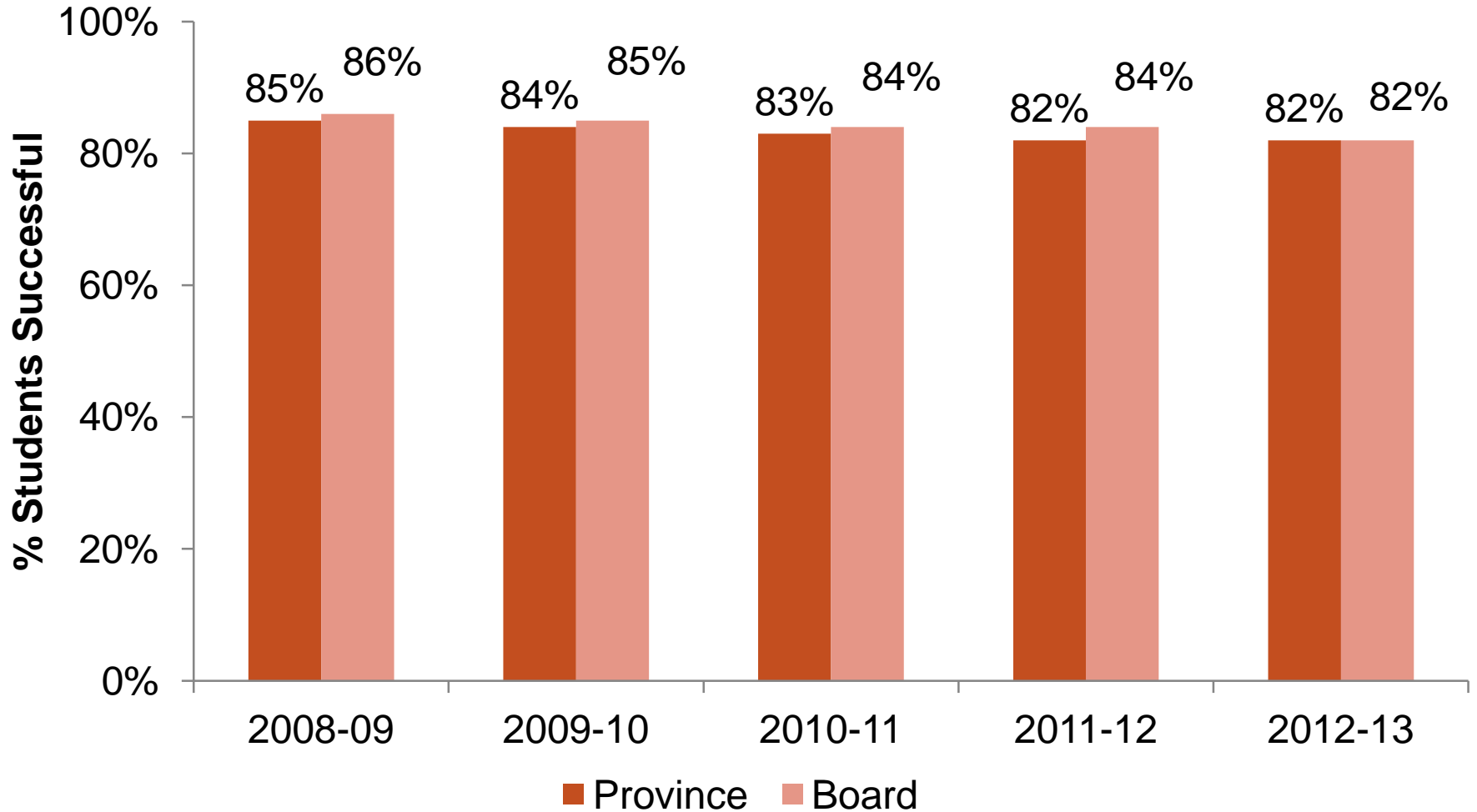
# DEMOGRAPHICS AT A GLANCE

First Time Eligible, UGDSB	#	%
Number of students:	2622	
Gender: <ul style="list-style-type: none"> <li>• Female</li> <li>• Male</li> </ul>	1302 1318	50% 50%
Student Status <ul style="list-style-type: none"> <li>• Special Needs (excludes gifted)</li> <li>• Special Needs, Receiving Accommodations</li> </ul>	519 407	20% 17%
Level of Study: <ul style="list-style-type: none"> <li>• Academic</li> <li>• Applied</li> <li>• Locally Developed</li> <li>• Other</li> </ul>	1627 747 139 91	62% 28% 5% 3%
Demographic information is provided by schools and/or boards. Not all of the numbers will add up to 100% , due to rounding.		

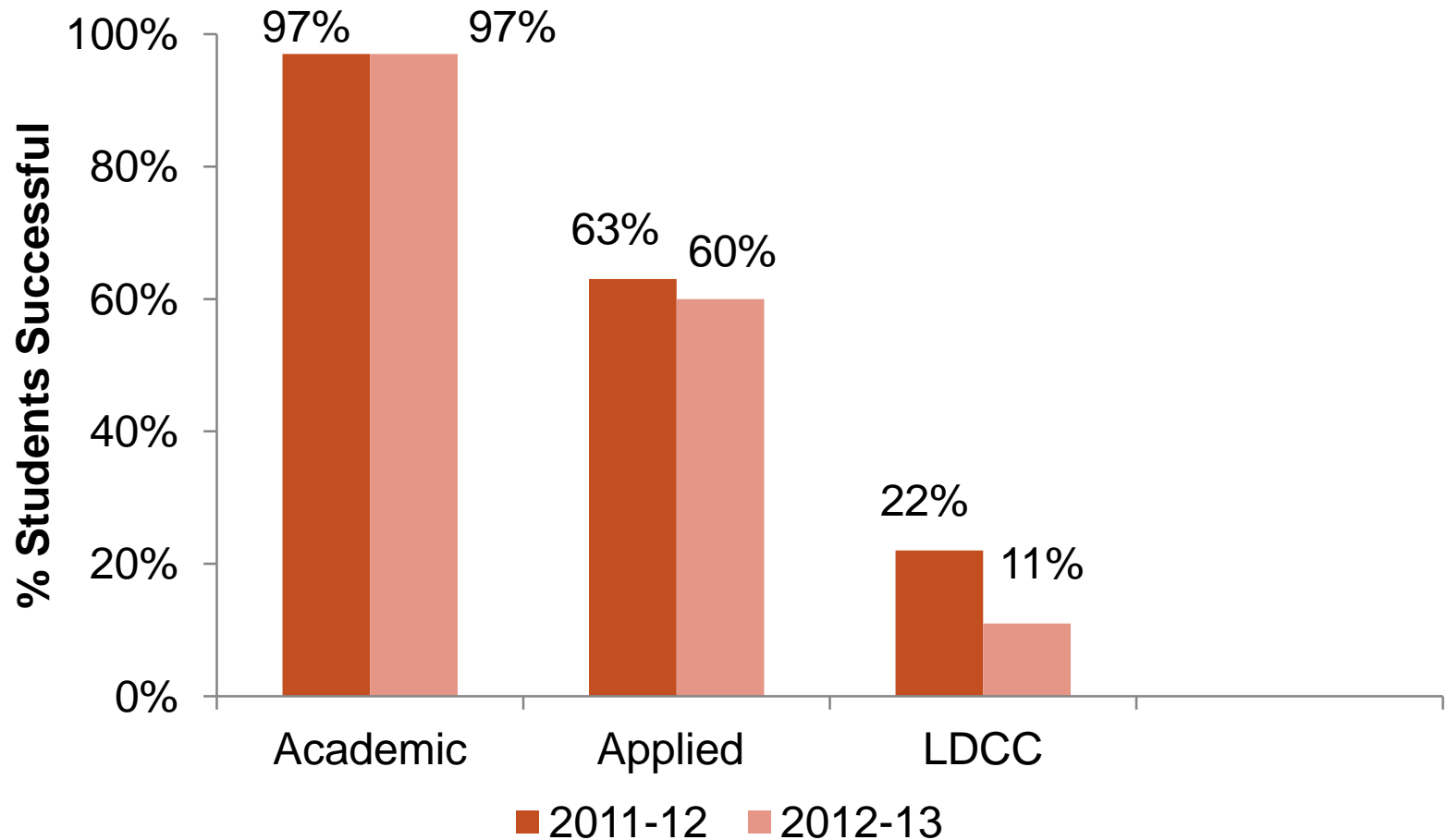
# FIRST TIME ELIGIBLE (FTE), FULLY PARTICIPATING SUCCESS RATES



# PROVINCE & UGDSB – OVERALL SUCCESS RATES FTE, FULLY PARTICIPATING

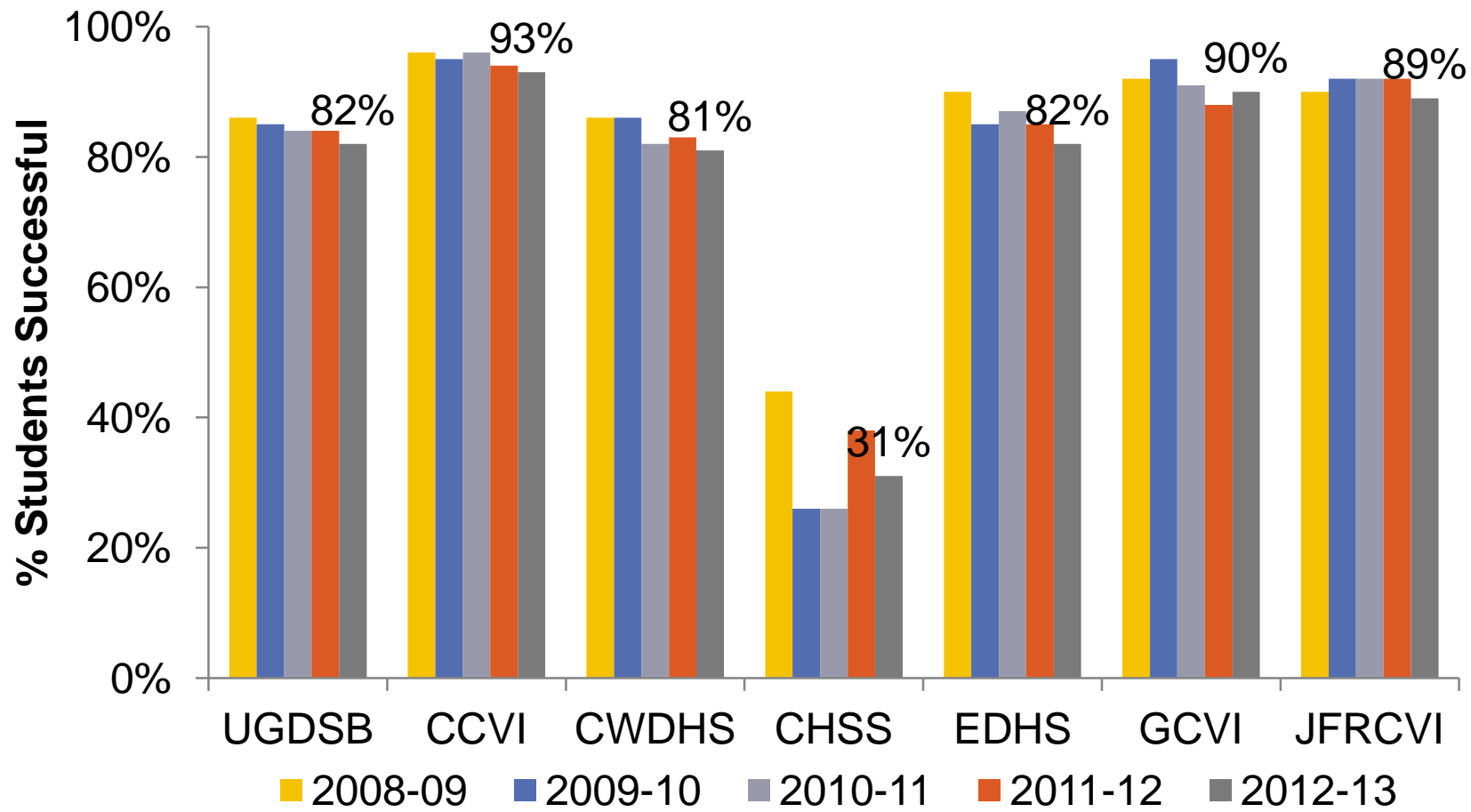


# SUCCESS RATES BY LEVEL OF STUDY FTE, FULLY PARTICIPATING

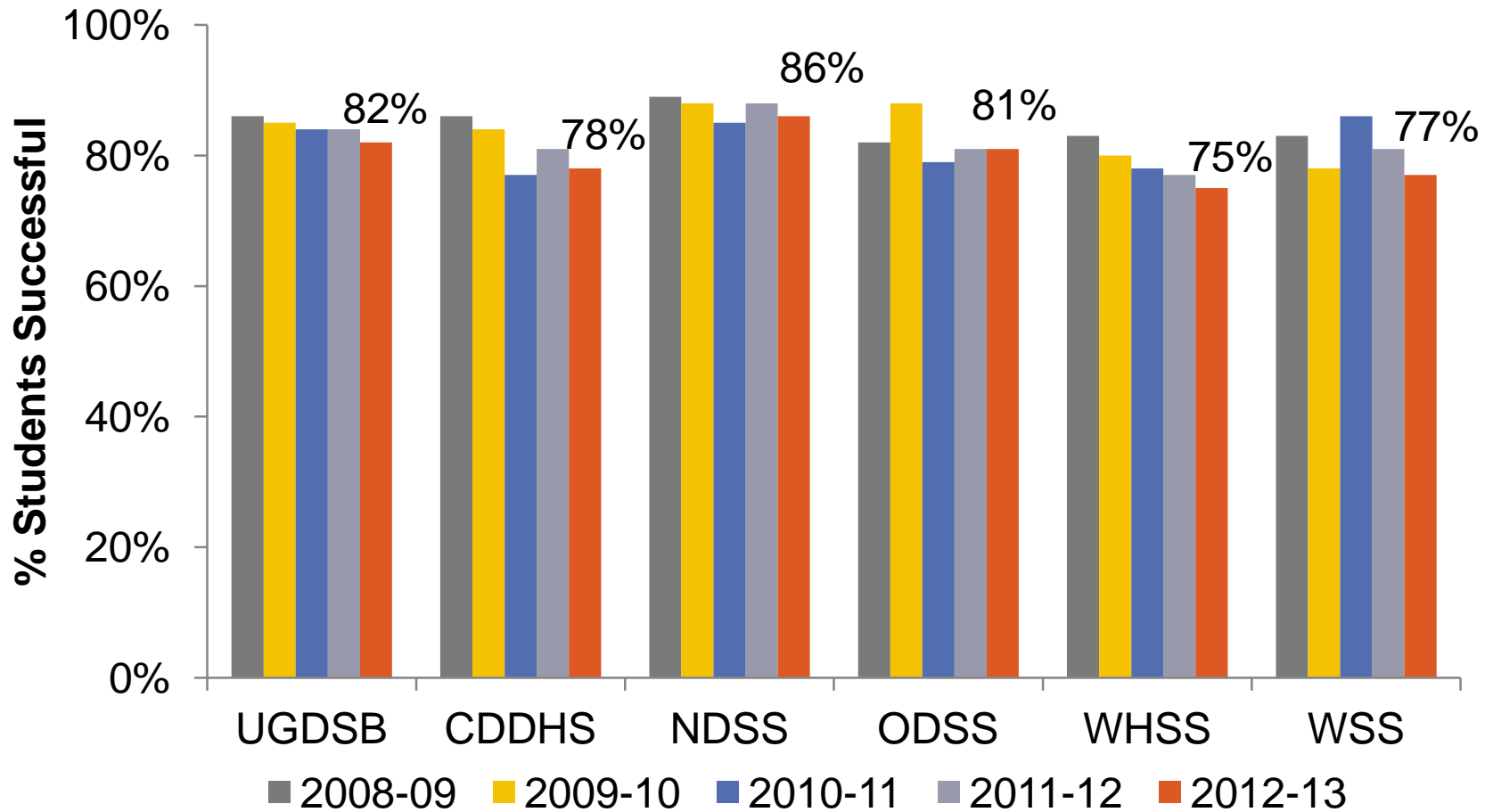


# SUCCESS RATES - SOUTH/CENTRE/EAST WELLINGTON

## FTE, FULLY PARTICIPATING (M2)



# SUCCESS RATES - NORTH WELLINGTON & DUFFERIN FTE, FULLY PARTICIPATING (M2)





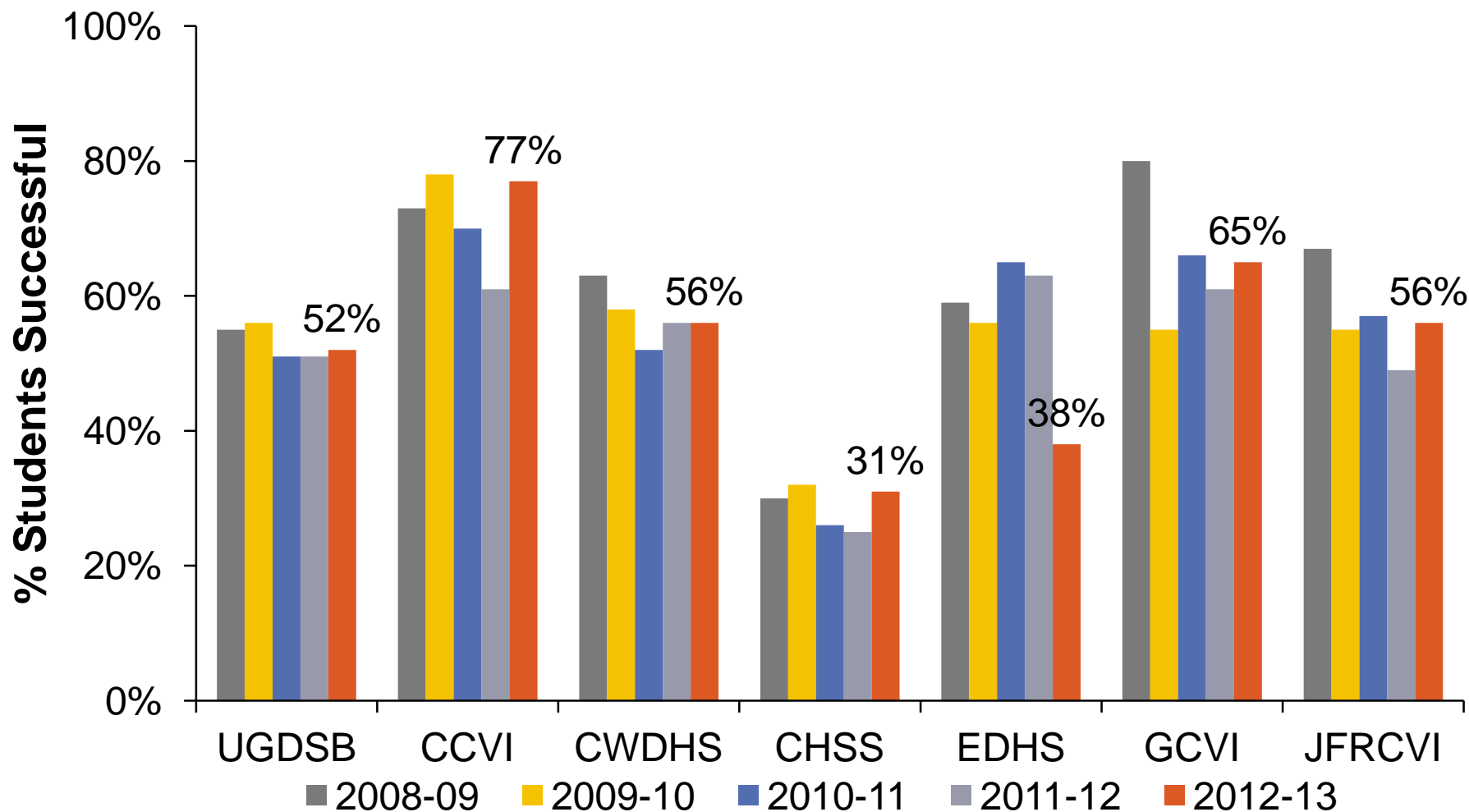
# PREVIOUSLY ELIGIBLE (PE), FULLY PARTICIPATING SUCCESS RATES



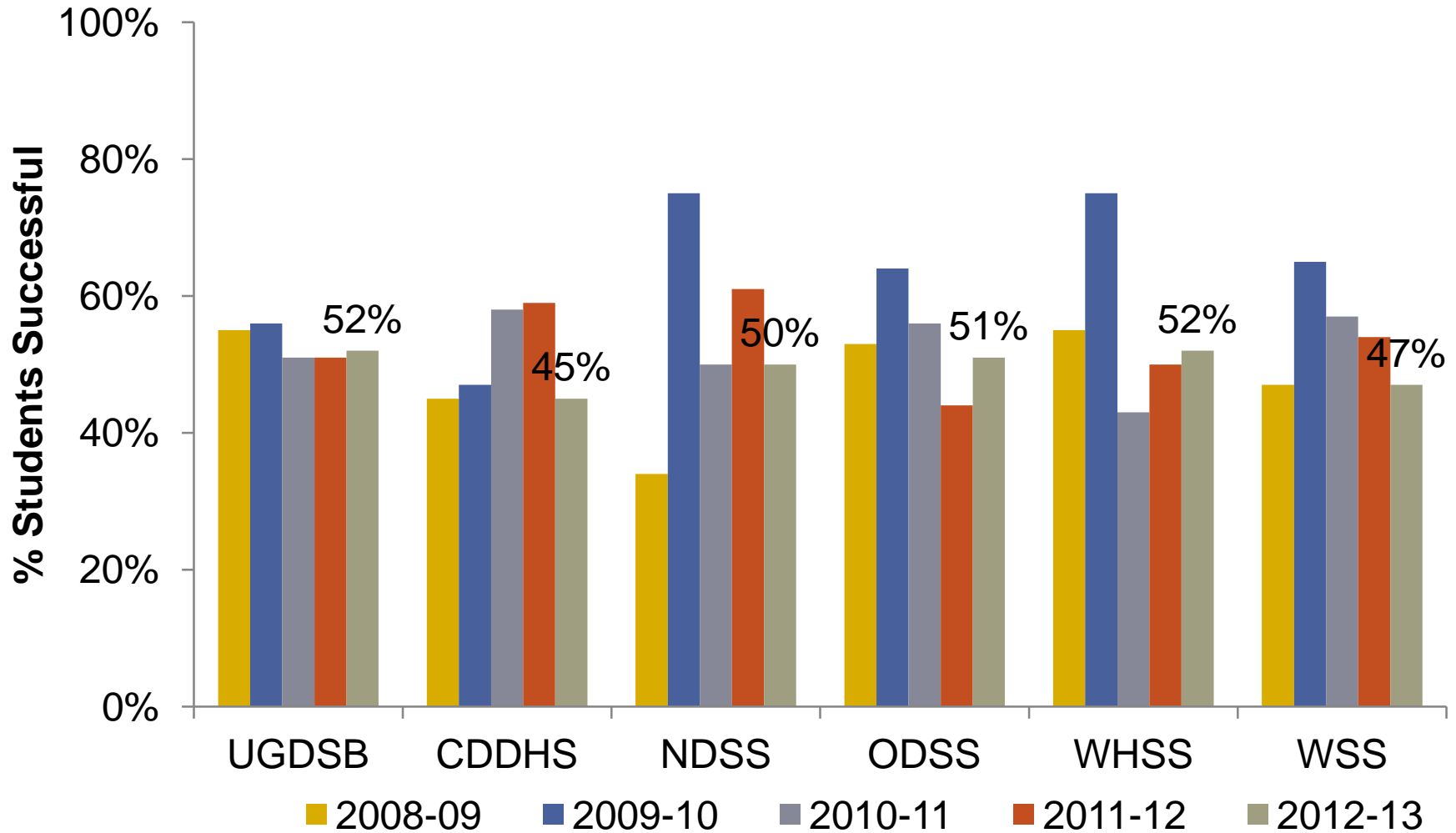
# DEMOGRAPHICS AT A GLANCE

<b>Previously Eligible, UGDSB</b>	<b>#</b>	<b>%</b>
Number of students:	845	
Number of students taking the OSSLC	170	20%
Gender:		
• Female	303	36%
• Male	542	64%
Student Status:		
• Special Needs (excludes gifted)	379	45%
• Special Needs, Receiving Accommodations	176	39%
* Some data may be missing because they were not reported by school		

# SUCCESS RATES - SOUTH/CENTRE/EAST WELLINGTON PE, FULLY PARTICIPATING (M2)



# SUCCESS RATES - NORTH WELLINGTON & DUFFERIN PE, FULLY PARTICIPATING (M2)

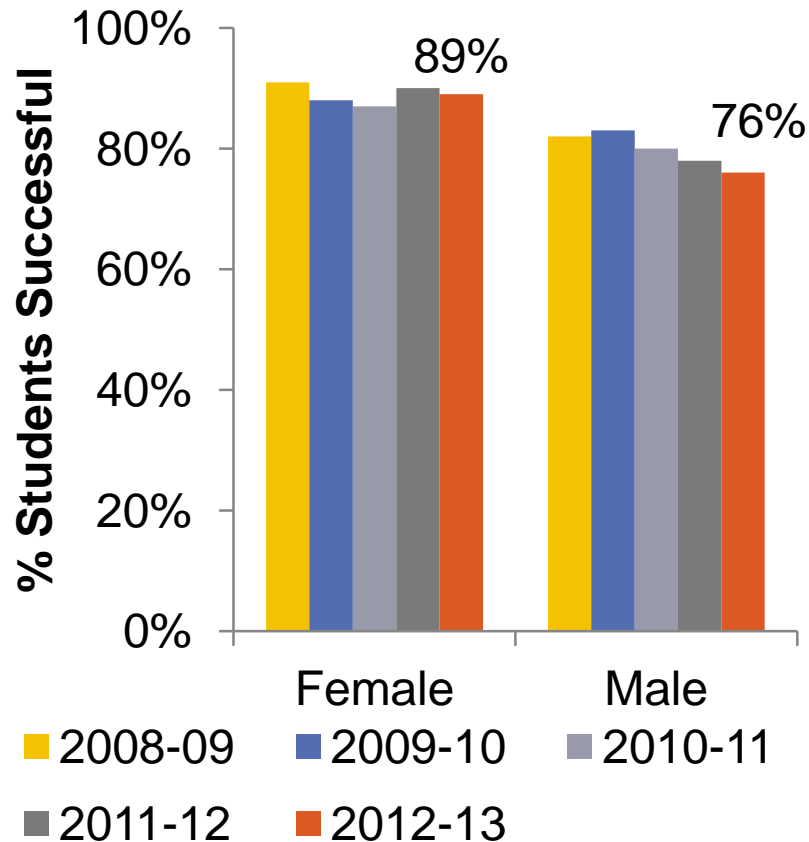


# SUB-GROUPS

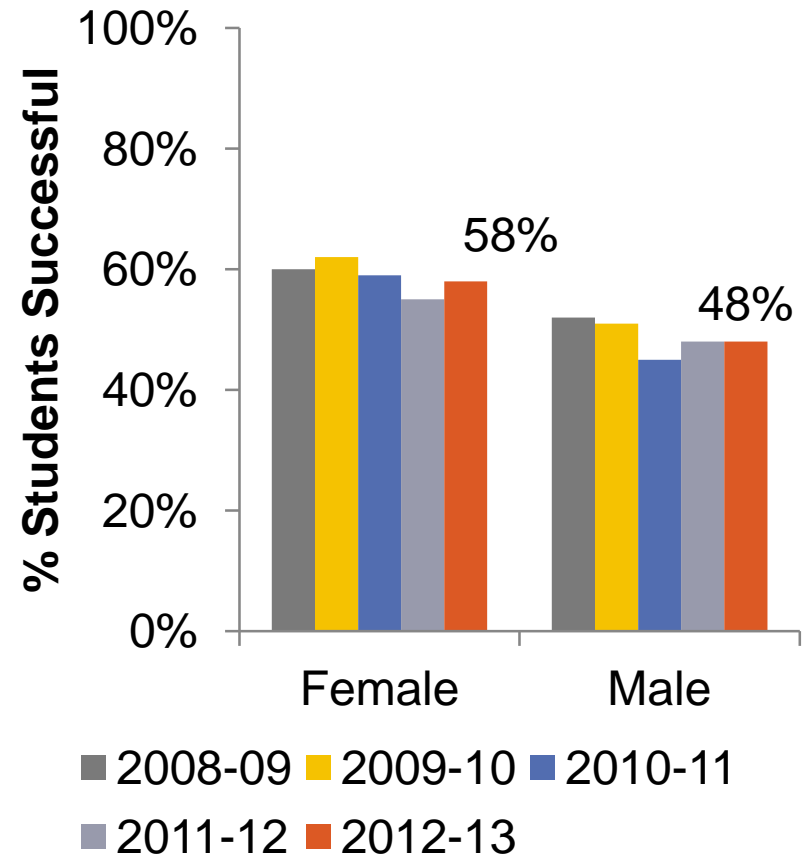


# GENDER COMPARISON

## FTE, FULLY PARTICIPATING

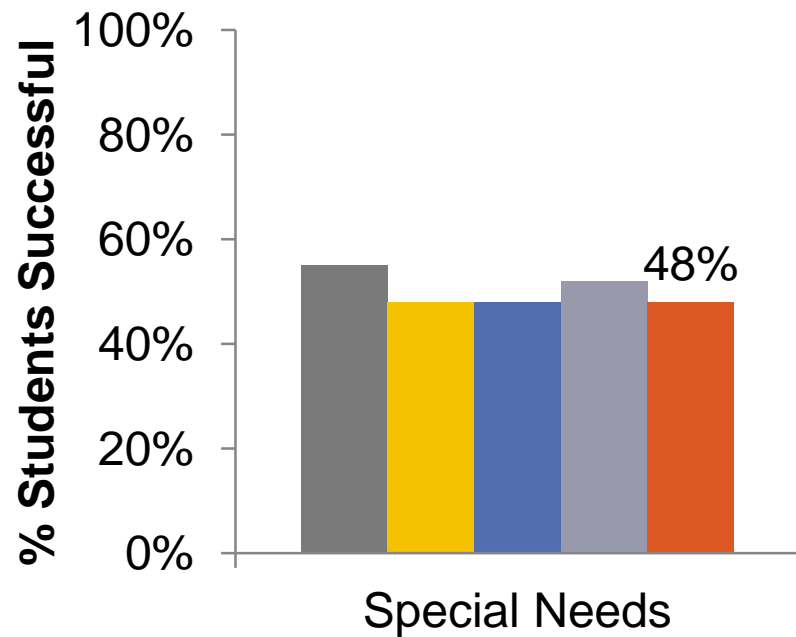


## PE, FULLY PARTICIPATING



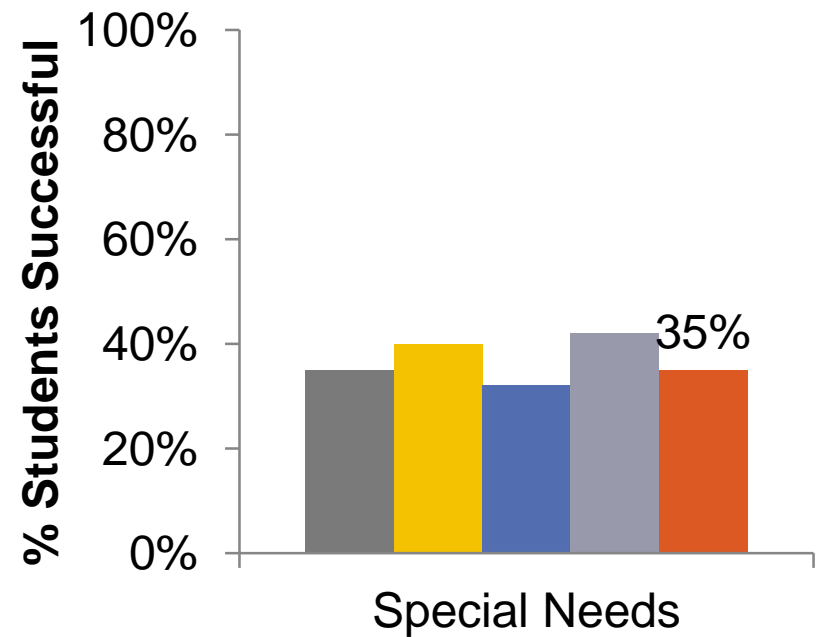
# STUDENTS WITH SPECIAL NEEDS (EXCLUDING GIFTED)

## FTE, FULLY PARTICIPATING



■ 2008-09 ■ 2009-10 ■ 2010-11  
■ 2011-12 ■ 2012-13

## PE, FULLY PARTICIPATING



■ 2008-09 ■ 2009-10 ■ 2010-11  
■ 2011-12 ■ 2012-13

# SUPPORTING STUDENT SUCCESS IN LITERACY

- **School based literacy teams**
- **Writing team for LDCC curriculum**
- **Workshops on the effective use of assistive technology for students with special needs, students in Essential (LDCC) and Applied level classes**
- **Early interventions and targeted support, especially for sub-groups**
- **Literacy Symposium (Nov. 8, 2013) for sharing effective practice in Adolescent Literacy**



# GRADE 9 ASSESSMENT OF MATHEMATICS



# GRADE 9 ASSESSMENT OF MATHEMATICS

- **Evaluates how well the students are meeting the curriculum expectations of the grade 9 Ontario Mathematics Curriculum**
- **Different booklets for Academic and Applied students**
- **Schools may decide to include the results of the assessment in a student's mathematics mark**

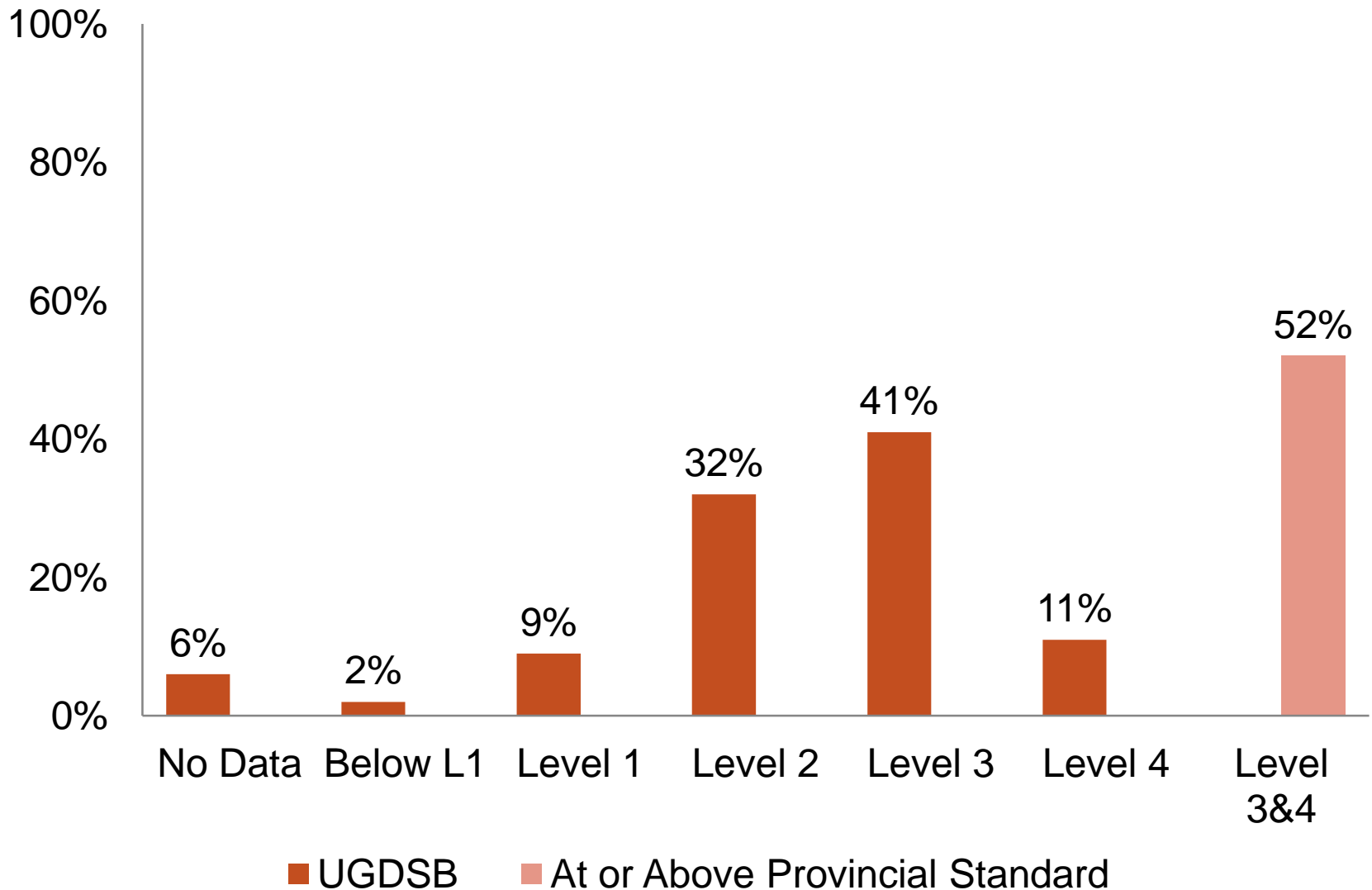
# DEMOGRAPHICS AT A GLANCE

	<b>Applied</b>	<b>Academic</b>
Number of students:	718	1657
Gender: <ul style="list-style-type: none"><li>• Female</li><li>• Male</li></ul>	38% 62%	54% 46%
Student Status <ul style="list-style-type: none"><li>• Special Needs, Receiving Accommodations</li><li>• Special Provisions</li></ul>	22% 1%	3% <1%

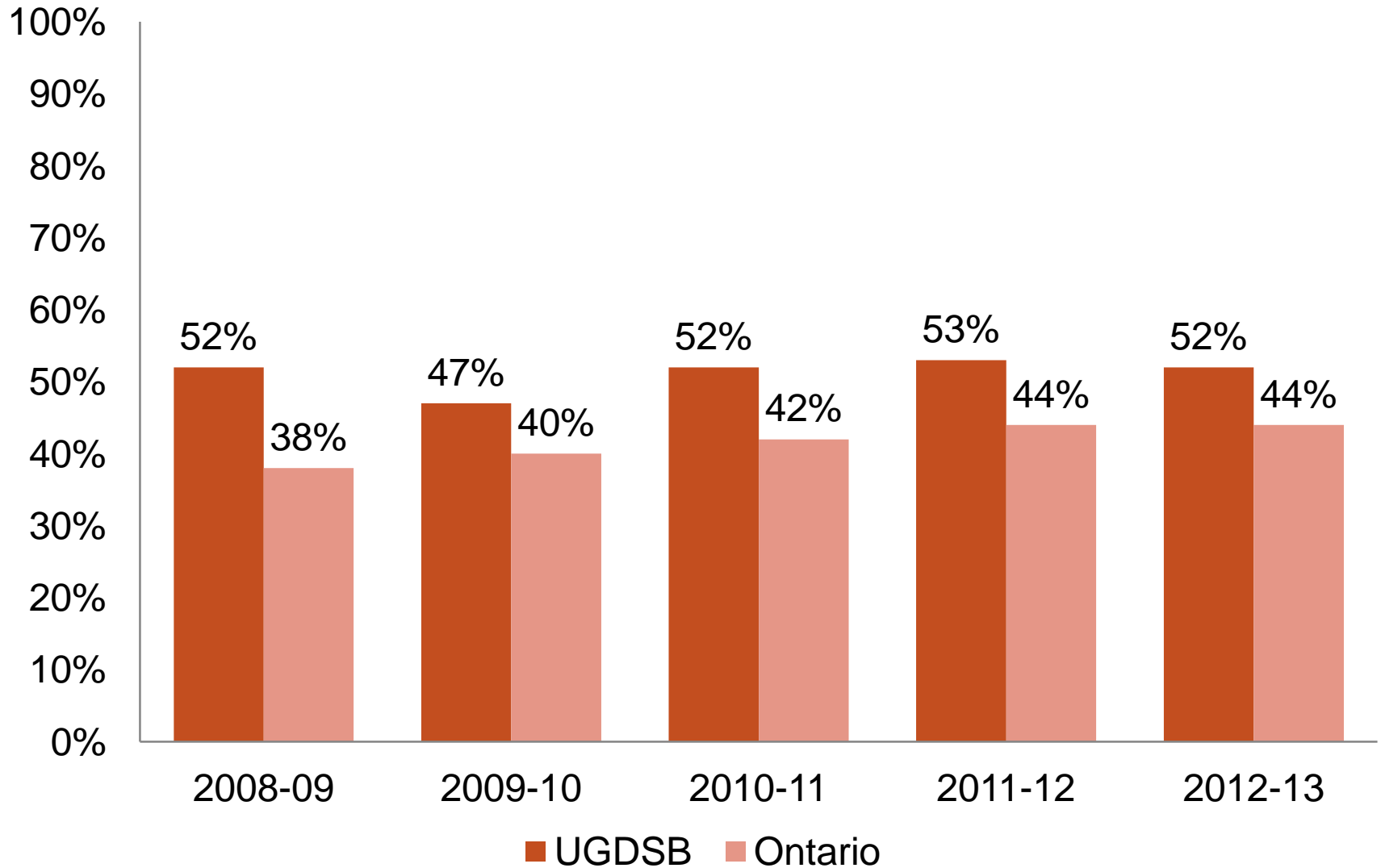
# APPLIED RESULTS



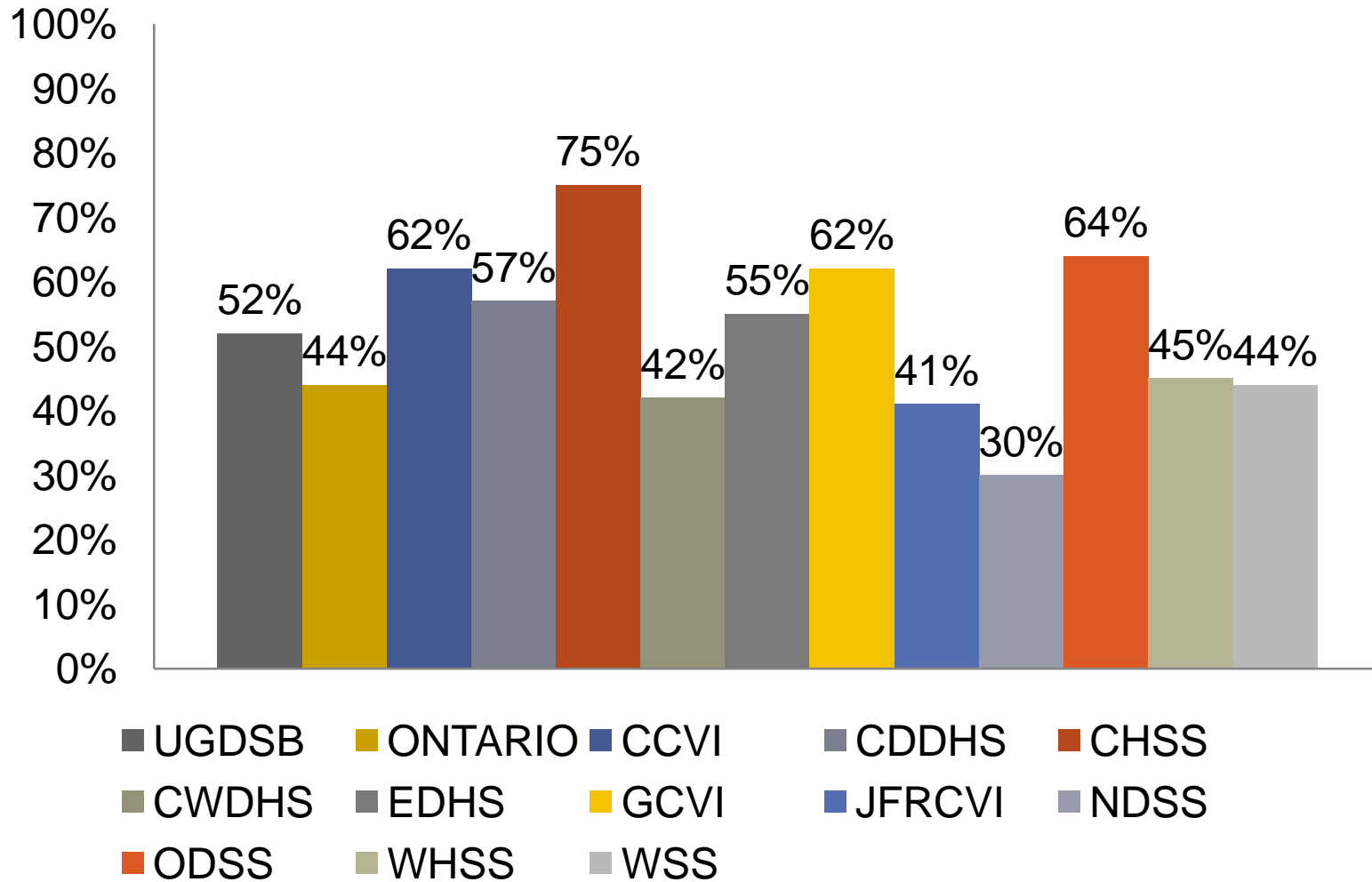
# RESULTS BY LEVEL



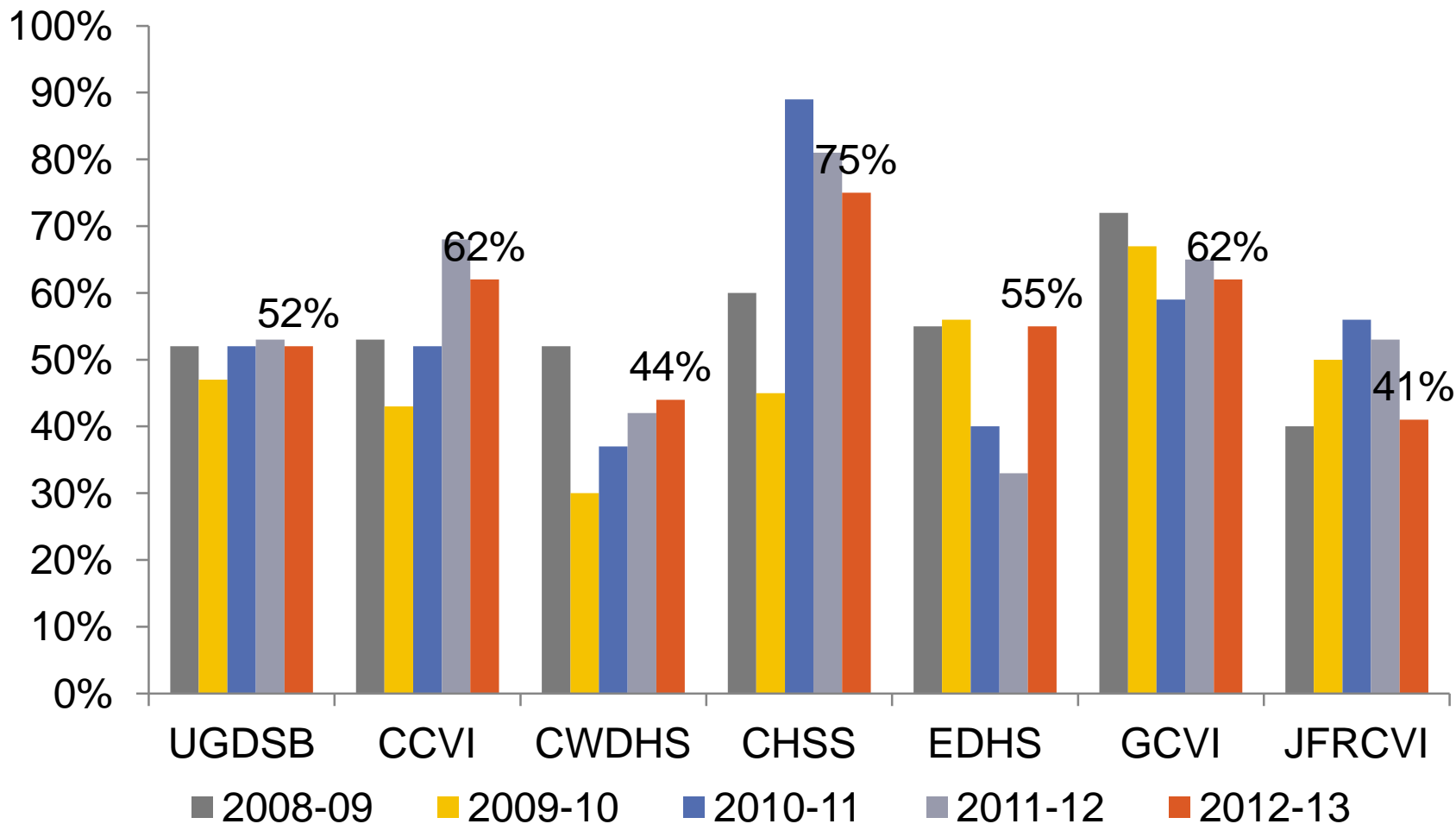
# RESULTS OVER TIME



# RESULTS BY SCHOOL

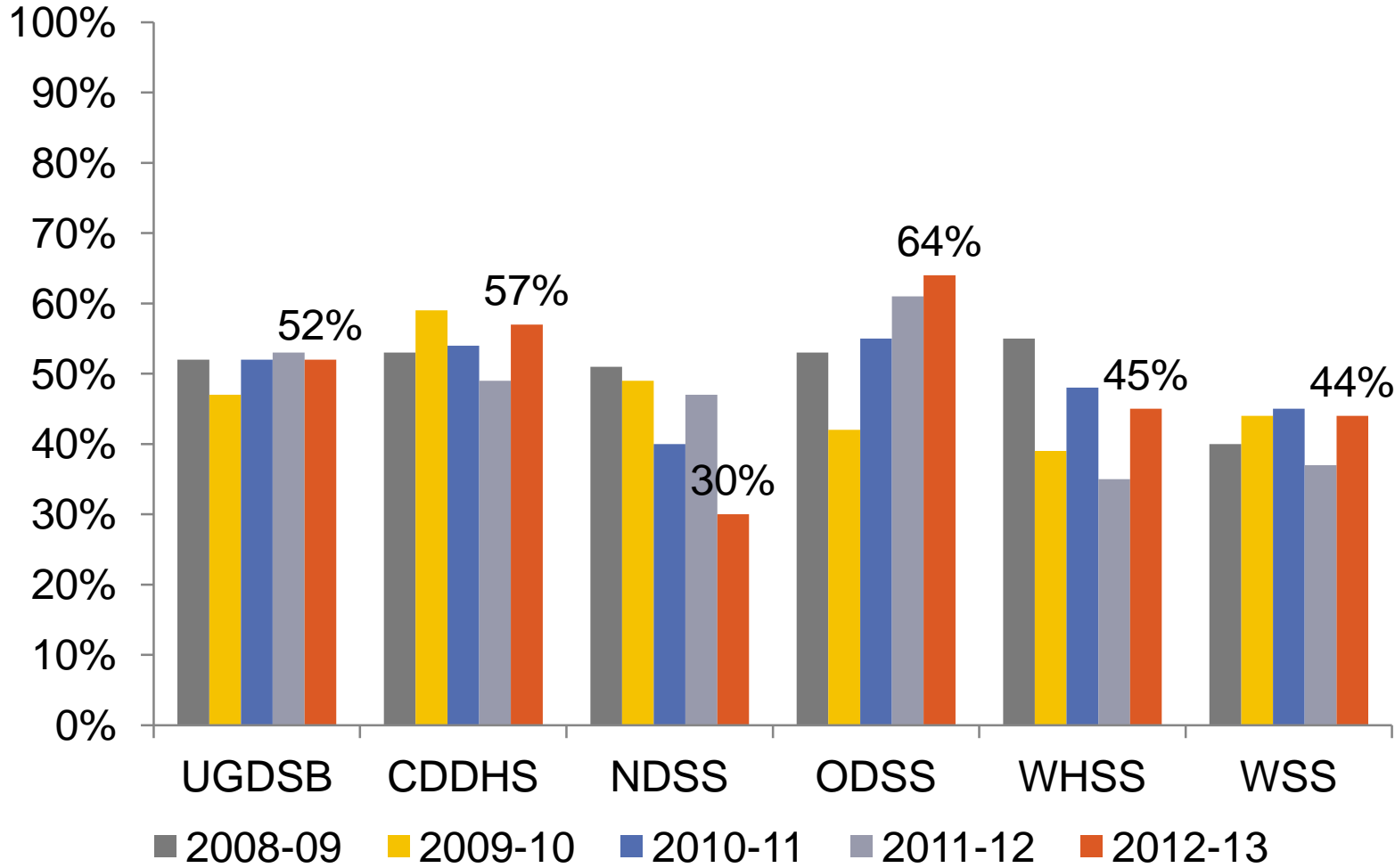


# SUCCESS RATES - SOUTH/CENTRE/EAST WELLINGTON





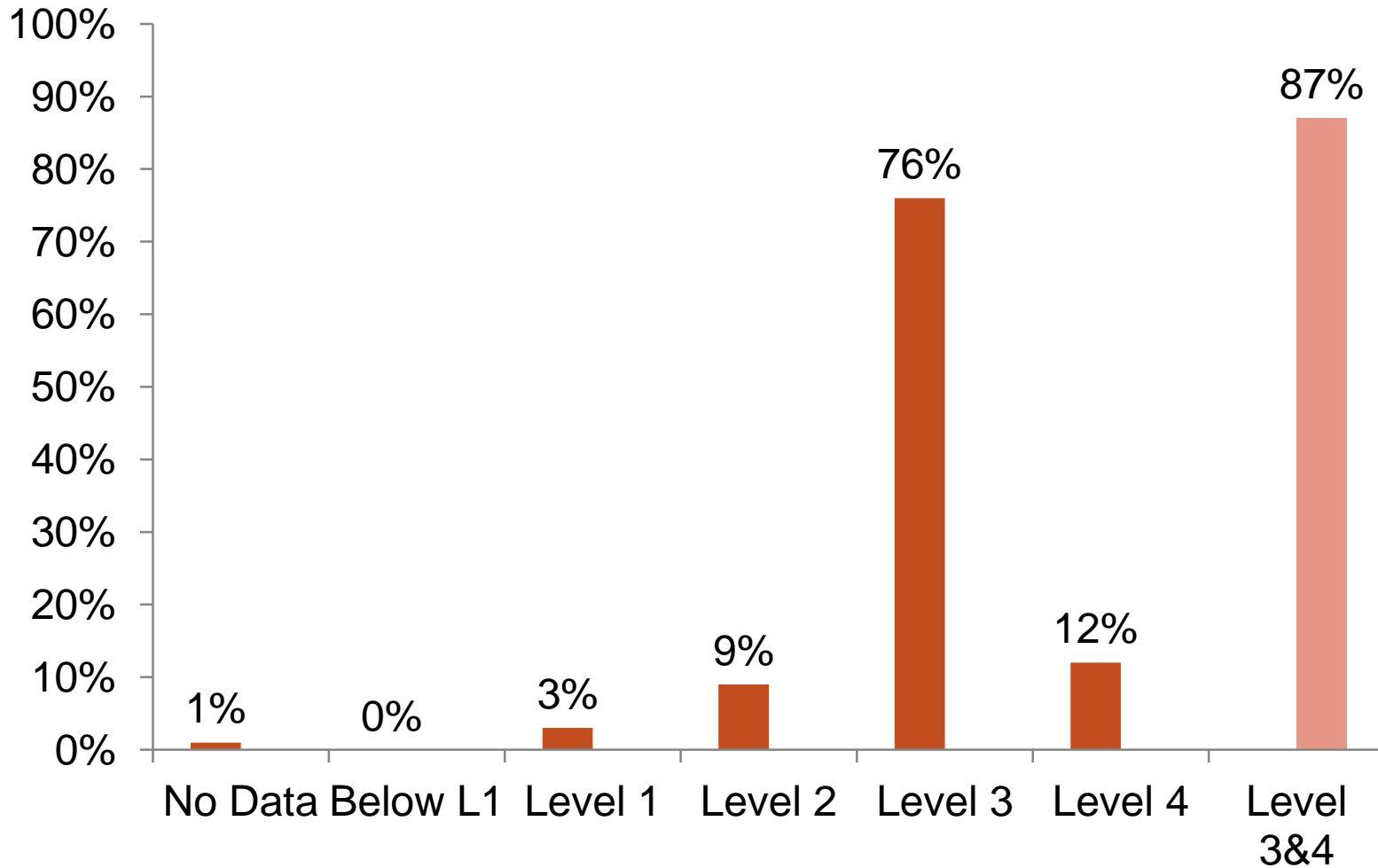
# SUCCESS RATES- NORTH WELLINGTON & DUFFERIN



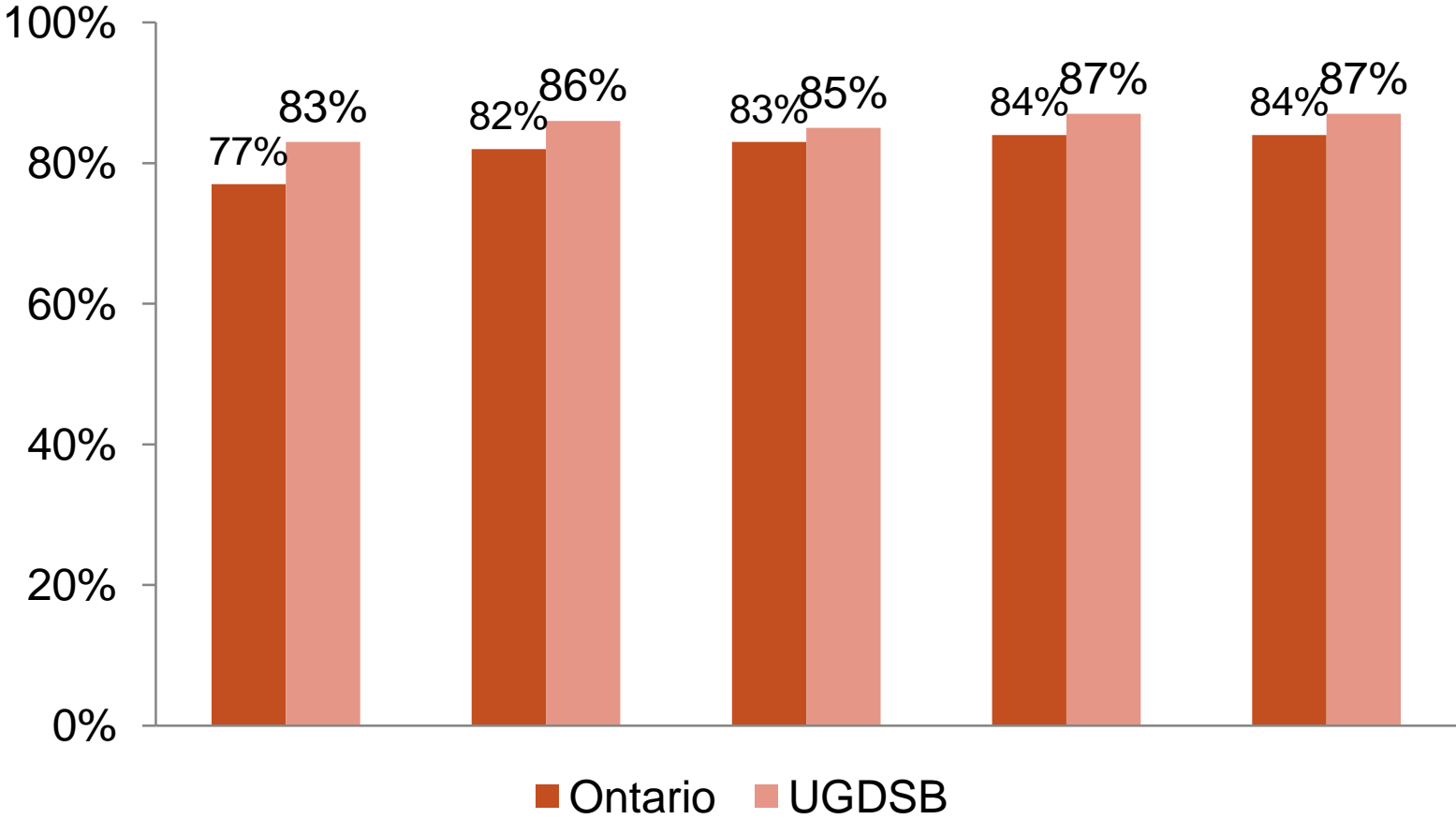
# ACADEMIC RESULTS



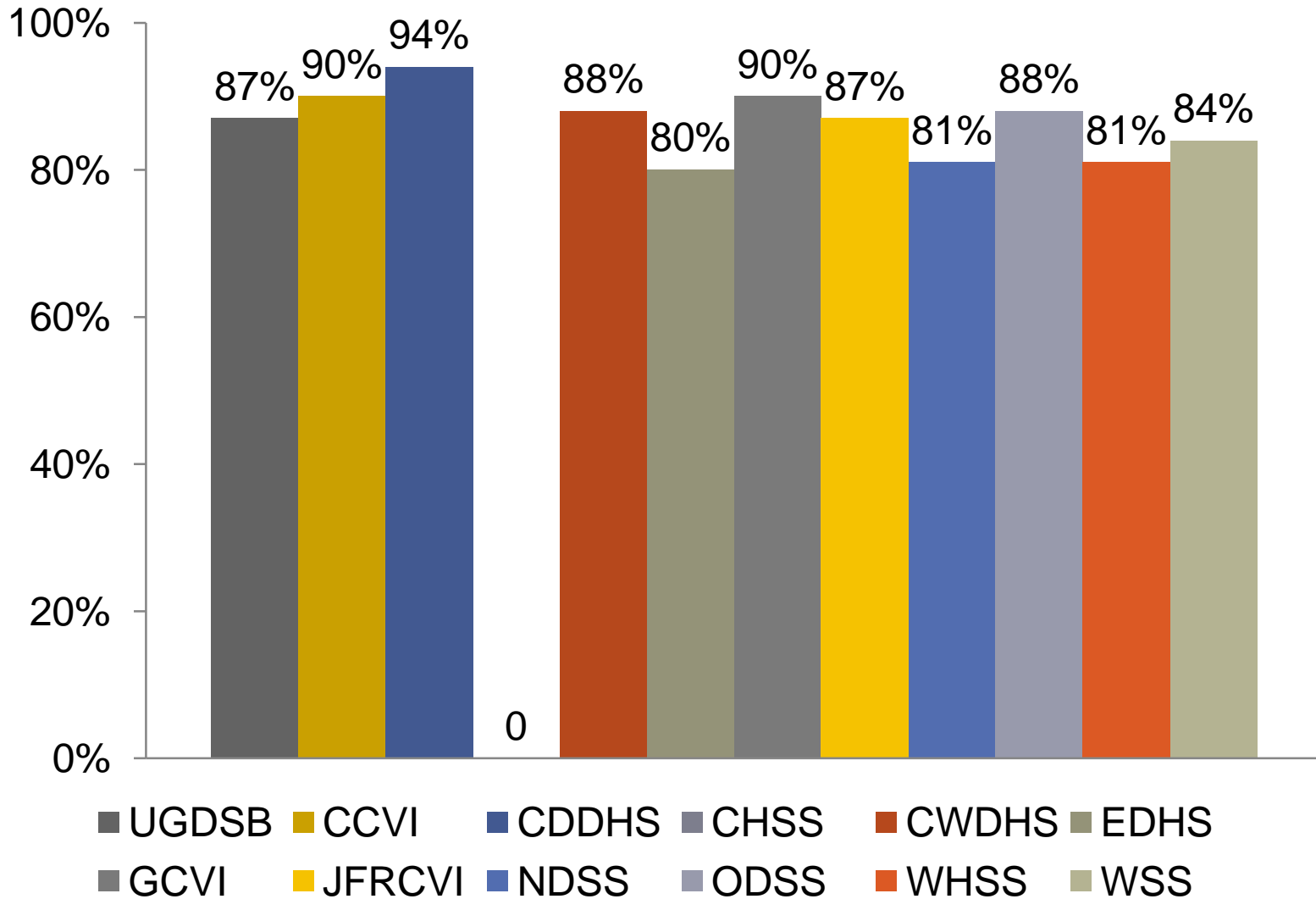
# RESULTS BY LEVEL



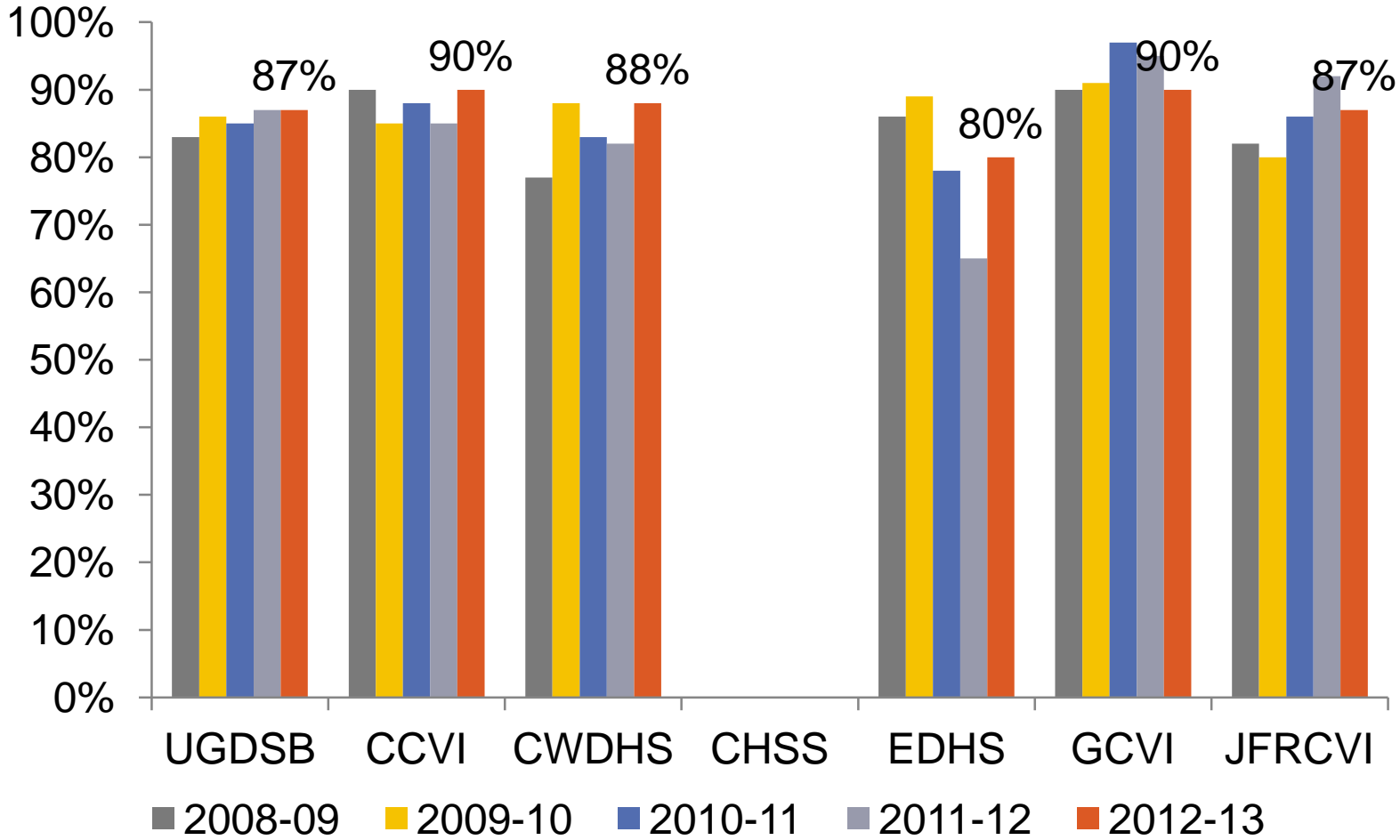
# RESULTS OVER TIME



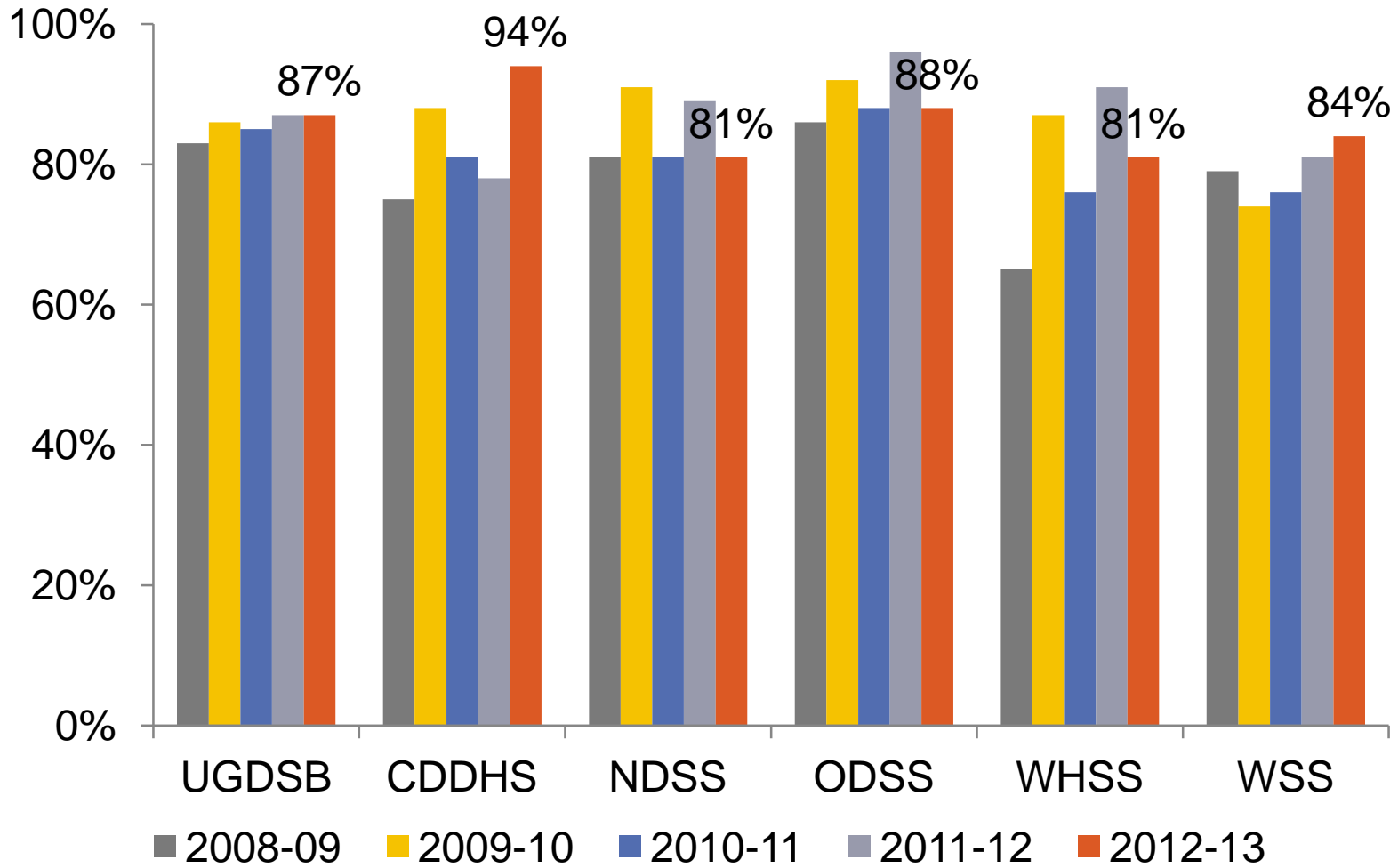
# RESULTS BY SCHOOL



# SUCCESS RATES- SOUTH/CENTRE/EAST WELLINGTON



# SUCCESS RATES - NORTH WELLINGTON & DUFFERIN

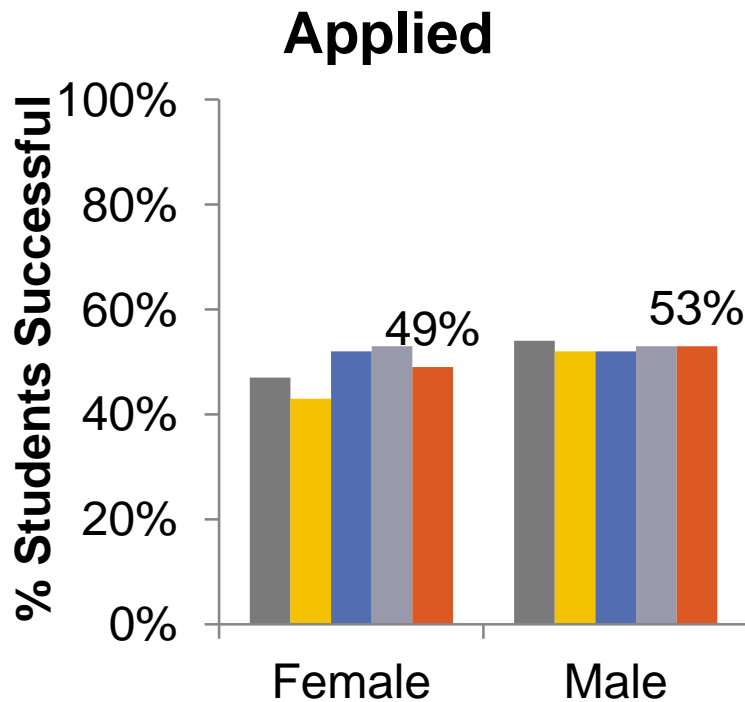


# SUB-GROUPS

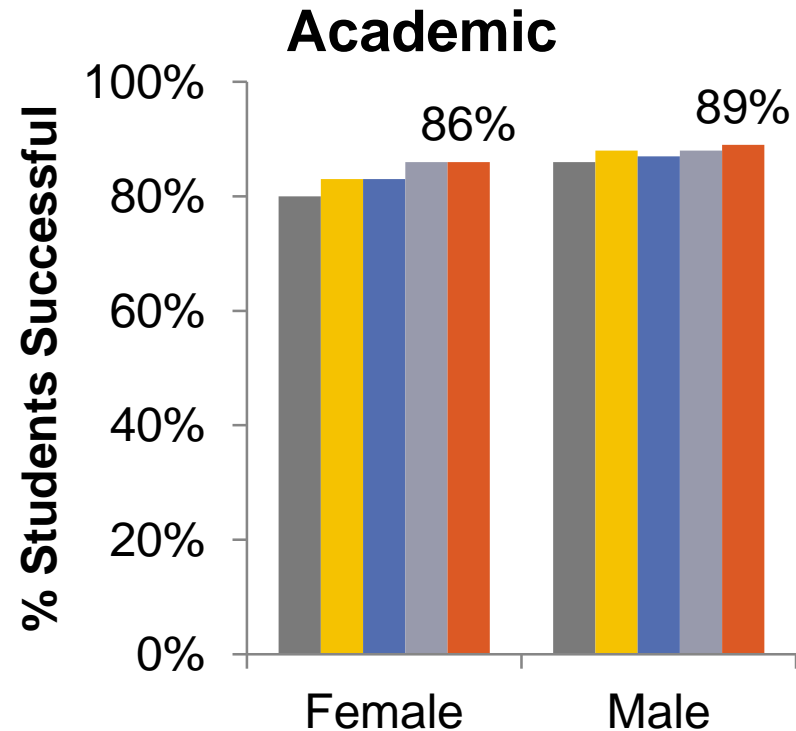




# GENDER COMPARISON

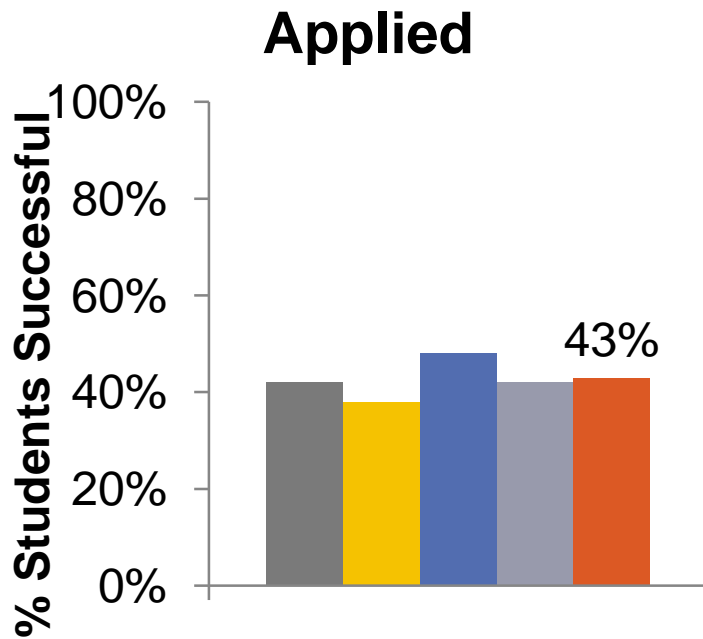


■ 2008-09 ■ 2009-10 ■ 2010-11  
■ 2011-12 ■ 2012-13

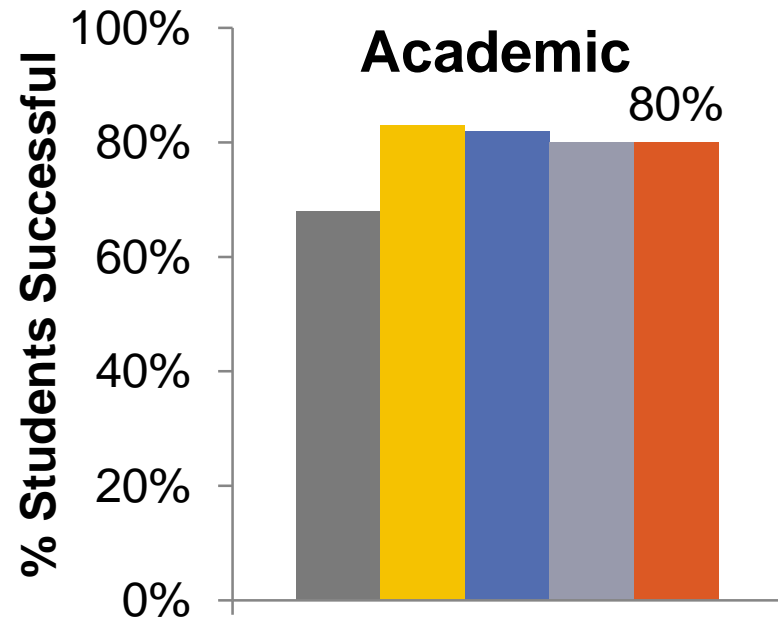


■ 2008-09 ■ 2009-10 ■ 2010-11  
■ 2011-12 ■ 2012-13

# STUDENTS WITH SPECIAL NEEDS (EXCLUDING GIFTED)



■ 2008-09 ■ 2009-10  
■ 2010-11 ■ 2011-12  
■ 2012-13



■ 2008-09 ■ 2009-10 ■ 2010-11  
■ 2011-12 ■ 2012-13

# OBSERVATIONS & QUESTIONS



# WHAT WE KNOW

- **In Math, we are above Provincial averages for both students in Applied and Academic courses**
- **In the OSSLT, we are in a downward trend overall for FTEs, which is consistent with Provincial data**
- **Results for students in Applied programs continue to be lower than their peers in Academic programs**
- **Females outperform males in literacy; females and males are performing similarly in math**

# WHAT WE WONDER

- **What can we do or do differently to support students in Applied Programs in order to improve results in both Literacy and Math?**
- **Why are the success rates different for males and females, in particular with respect to literacy scores?**
- **Why are we and the province seeing a decline in success rates in literacy?**
- **What percentage of teachers are using inquiry or problem-solving in the classroom to encourage high order thinking?**
- **Why are there differences between EQAO data and report card data?**

# NEXT STEPS

- 1. Full analysis of the Detailed School and Board Results (available Sept. 25)**
- 2. Professional learning for Administrators, School Leaders, and Teachers using a variety of data sources**
- 3. Continue professional learning through workshops, Professional Learning Communities (PLCs), and Collaborative Learning in Classrooms (CLiCs)**
- 4. Continue to focus on instructional leadership, assessment and evaluation practice, and sharing effective practice**
- 5. Continue data analysis and supports for sub-groups (students in LDCC, ESL/ELD, Applied courses; students with special needs)**